



890 Broadway, Fifth Floor, New York, NY 10003 212 677 8560

280 Broadway (enter at 53A Chambers Street), New York, NY 10007 646 837 6809

www.gibneydance.org

Agnes Varis Performing Arts Center

Studio H THEATER

TECHNICAL RIDER (JUNE 2017)

Questions regarding production/technical aspects of Studio H THEATER should be directed to: Asami Morita, Gibney Dance Technical Director, asami@gibneydance.org.

Technical/Production Information and Requirements

The Gibney Dance Technical Director is responsible for the safe and efficient operation of the studio and the equipment at all times.

- Gibney Dance will provide its normal complement of lighting, sound, and video equipment listed in later section. Gibney Dance is not responsible for technical support over and above what is outlined in this list. If RENTER's work demands additional technical support, RENTER will incur all expenses associated with that support.
- The Technical Director has sole discretion of use of any set pieces or additional equipment before it is brought in or used at the studio. The Technical Director may require temporary use of any set piece or additional equipment on a trial basis, and if it does not meet the safety standards of the studio, may determine that set pieces cannot be used.
- All sets should be portable since they must be cleared from the studio at the end of each rehearsal or performance due to the use of the studio for classes and rehearsals in the time periods surrounding the engagement. RENTER's sets, props, costumes and rented equipment may be stored in Theater Dressing Rooms (lockable) between performances. RENTER's equipment and property is stored at RENTER's own risk. The Technical Director will approve and coordinate the storage of sets and props.
- Hanging props and set pieces are discouraged since the ceiling in the studio cannot bare heavy loads. If a hanging set piece is approved by the Technical Director, RENTER will provide a competent technician to install the approved rigging plan and supply its own hardware to mount it. There shall be no taping or nailing on the walls.
- Scenic elements are required to be flame proofed. A current (12 month or less) New York State certificate of flame proofing by an authorized individual will be required for each piece before it can be approved or installed.
- The use of fire during performances and in the building, including but not limited to matches, cigarettes, candles, and/or incense is not permitted. This includes the melting of dancer adhesives such as elasticon, mole skin, surgical tape, etc.



890 Broadway, Fifth Floor, New York, NY 10003 212 677 8560

280 Broadway (enter at 53A Chambers Street), New York, NY 10007 646 837 6809

www.gibneydance.org

- The use of a smoke Machine, fog Machine, or hazer is not permitted.
- Delivery/drop off of any elements for RENTER's performance should be done at the scheduled load-in time. Delivery of any performance elements will not be made before the scheduled load-in time unless specifically arranged with and approved by the Technical Director.
- The strike will take place immediately following the final performance. RENTER's sets, props, costumes, and rented equipment should be removed from the studio immediately after the strike unless an arrangement is made with the Technical Director.
- Gibney Dance will provide each production with 3 crewmembers, one or all of whom may be a participant in the Gibney Dance Resident Production Training Program. Each production is staffed with one (1) Light Board Operator, and one (1) Sound/Video Operator, and one (1) Deck person. If RENTER's production requires additional personnel or RENTER feels that trainees cannot handle the production needs, RENTER is responsible for hiring additional personnel at RENTER's own expense. Please inform Gibney Dance if you intend to hire additional personnel for your production at least 30 days in advance of performance.
- RENTERS should note that the first and last hours of all technical rehearsals in the theater will be used by the technical crew to change over the space from its class configuration into its performance configuration. RENTER will not be able to use this time for dancer rehearsals or cue-to-cues. We appreciate the RENTER's patience in this matter.

Audio

- As a general practice Gibney Dance does not provide live audio mixing. If RENTER needs live mixing or very specific audio needs, other than general playback, the RENTER should provide their own audio person
- Gibney Dance has a small inventory of audio cable and adapters, but is not responsible for purchasing any expendables for RENTER's specific audio needs

Lighting

- Gibney Dance has a comprehensive REP plot. Please find it later section.
- Specials may be added within the limits of available circuits and equipment.
- Electrical/Dimmer Tie-Ins cannot be used in the space



890 Broadway, Fifth Floor, New York, NY 10003 212 677 8560

280 Broadway (enter at 53A Chambers Street), New York, NY 10007 646 837 6809

www.gibneydance.org

Other Information

- Any equipment rental must be discussed with and approved by Technical Director prior to the RENTER's time in the space.
- More equipment might be available. Please inquire before arranging rentals.
- Gibney Dance has a costume steamer available. We ask that RENTER supply, at their own expense, the distilled water necessary to use this equipment.

Studio Specifications and Space Dimensions

- Please find studio dimensions in later section.

Space Setup Options

- a) Raw - Space completely open - No soft-goods, mirrors exposed, boom SR, no booms SL
 - b) Semi-Raw - Booms SR, booms in SL, mirror exposed or covered, SR soft-goods optional
 - c) Proscenium style with wings
 - d) Background options include Black Traveler or Brick Wall or the White Bounce Drop (for Projection)
- The windows will be closed with the black shades drawn. Window areas may not be utilized or touched. No one may operate the shades other than Gibney Dance Production Staff.

Floor

- The Studio floor covering is Wood sprung dance floor - Ebony finish - semi-reflective - Please note the floor has a very sensitive finish on it.
- Please take care that nothing mars or scratches the floor – this includes chairs, wheels, canes, and shoes (basically anything that touches the floor). Please inform the Technical Director if there are any questions regarding this issue. Felt may be required on all items if the Technical Director deems it necessary.
- The stage will be covered by Black Marley for POP productions.
- If RENTER's program includes the use of footwear for tap, flamenco, acoustic sounds, etc., it will be necessary to use masonite to cover the floor. RENTER should notify Technical Director of this need at least 30 days in advance of performance to ensure proper set-up time is reserved.



890 Broadway, Fifth Floor, New York, NY 10003 212 677 8560

280 Broadway (*enter at 53A Chambers Street*), New York, NY 10007 646 837 6809

www.gibneydance.org

- RENTER shall not allow any shoes, set pieces, musical instruments, or other objects on the floor that may scratch, mar, or damage the floor of the Studio.
- No powder, oil, glycerin, or rosin may be used on the floor or feet. If RENTER would like to use another substance, RENTER should notify Technical Director, who will approve any usage.
- When using spike tape, RENTER should place painter's tape underneath, as painter's tape is the only item that that may be put on the floor directly (even when securing cables). If RENTER is uncertain about use of painter's tape, please direct any questions to the Technical Director.
- No objects may be secured to the floor. Only Gibney Dance Production Staff are to put spike marks down.

Aerial Work

- Aerial work is not permitted.



890 Broadway, Fifth Floor, New York, NY 10003 212 677 8560

280 Broadway (enter at 53A Chambers Street), New York, NY 10007 646 837 6809

www.gibneydance.org

STUDIO H THEATER EQUIPMENT INVENTORY

as of 8/7/2017

PLEASE NOTE INVENTORY SUBJECT TO CHANGE WITHOUT NOTICE

LIGHTING

Lighting Control

- 89 ETC Sensor Dimmers CEM+
 - 4 6K *** PLEASE NOTE: 3 used in REP – **1 Free** for Specials
 - 20 2.4K *** PLEASE NOTE: 19 used in REP – **1 Free** for Specials
 - 65 1.2K *** PLEASE NOTE: 51 used in REP – **14 Free** for Specials
- ETC Element Lighting Console

Lighting Instruments

- ETC Source Four: 36° Ellipsoidal *** 10 used in REP – **5 Free** for Specials
HPL 575W 115V
- ETC Source Four: 50° Ellipsoidal *** 48 used in REP – **5 Free** for Specials
HPL 575W 115V
- Selecon Pacific 90° Fixed Beam *** 0 used in REP – **8 Free** for Specials
GLC HX604 575W 120V
- Selecon 6" PC *** 10 used in REP – **2 Free** for Specials (BTH 575W 120V)
BTN 750W 120V
- Selecon 6" Fresnel *** 10 used in REP – **2 Free** for Specials (BTH 575W 120V)
BTN 750W 120V
- Selecon HUI Cyc 1 *** 12 used in REP – **00 Free**
BTN 750W 120V
- Altman 1000 Watt Focusing CYC *** **3 used** in REP(Channel92 Center 3Units)– **00 Free**
T3 1000W
- Altman Q-Lite (Mini 10) *** 00 used in REP – **4 Free** for Specials
FCL 500W



890 Broadway, Fifth Floor, New York, NY 10003 212 677 8560

280 Broadway (enter at 53A Chambers Street), New York, NY 10007 646 837 6809

www.gibneydance.org

More equipment *may* be available pending other center activity. Please inquire for availability of below inventory.

ETC Source Four Ellipsoidal 50°
ETC Source Four 70° Lens Tube

Cables

*** Please Note: Use is subject to availability. If not in stock and/or available, renters will be responsible for providing any additional cable outside of the rep plot.

Stage-Pin Cable

- 31 5' NOTE: 18 used in Rep – 13 Free for Specials
- 50 10' NOTE: 30 used in Rep – 20 Free for Specials
- 04 15' NOTE: 00 used in Rep – 4 Free for Specials
- 36 25' NOTE: 33 used in Rep – 3 Free for Specials
- 05 50' NOTE: 3 used in Rep – 2 Free for Specials
- 04 100' NOTE: 00 used in Rep – 4 Free for Specials
- 35 Two-fer NOTE: 18 used in Rep – 23 Free for Specials

Adapters:

- 3 FEDs NOTE: Female Edison to Male Stage-pin

Lighting Accessories

- 12 Barn door - 7.5"
- 20 Top Hat – 6.25"
- 49 Half Hat / Eyelash – 6.25"
- 8 Gobo Holder - ETC Source 4 - A size
- 4 Gobo Holder - Selecon Pacific 90
- 8 Iris - ETC Source 4

AUDIO

Sound Console

- 1 Yamaha 12 Ch Digital mixer 01V96 V. 2



890 Broadway, Fifth Floor, New York, NY 10003 212 677 8560

280 Broadway (enter at 53A Chambers Street), New York, NY 10007 646 837 6809

www.gibneydance.org

<http://www2.yamaha.co.jp/manual/pdf/pa/english/mixers/01V96V2E1.pdf>

Playback Rack

- 1 CD/ Cassette Tascam CD-A700
- 2 Sony MDS-JE480Mini disk Recorder/ Player
- 1 Power Conditioner and outlet with lights (mounted at back) Raxxess PD800L

PA Speakers

- 2 Main House Speakers - EAW VR21
- 1 Subwoofer Speaker (Located under audience seating) - EAW VRS12 OM8412
- 2 Monitor Speakers (Stage Monitors) - EAW VRM12

Amplifier Racks

- 1 Rack for Amplifiers (Gator 12 Space)
- 3 Industrial Stereo Amps – 2x Tapco J 1400, 1x QSC GX5
- 1 Speaker Management Processors (Digital Speaker Processor 2x6)- dbx DriveRack PA
- 1 2-space Rack Panel Vent
- 2 1-space Rack Panel Vent
- 1 2 Space panel w/ 6 X F. XLR panel mount to 2 ca M. XLR. 6 X NL4 Panel to mount to 2' Cable terminal
- 1 Internal Rack Cable (Connection from Input panel to Processor and Amp Custom output panel)

Cables

*** Please Note: Use is subject to availability. If not in stock and/or available, renters will be responsible for providing any additional cable outside of the rep plot.

- 5 Speakon cable 50' NOTE: 03 used in Rep – 2 Free
- 1 Speakon cable 25' NOTE: 00 used in Rep – 1 Free
- 3 Speakon cable 10' NOTE: 02 used in Rep – 1 Free
- 8 XLR Cable 50'
- 6 XLR Cable 25'
- 8 XLR Cable 10'

Microphones

- 1 Shure PG58
- 2 CAD GXL1200
- 1 CAD GXL3000
- 2 Crown Floor Mics Supercardioid PCC160



890 Broadway, Fifth Floor, New York, NY 10003 212 677 8560

280 Broadway (enter at 53A Chambers Street), New York, NY 10007 646 837 6809

www.gibneydance.org

R.F Microphones

- 1 Hand Held Wireless microphone ATW-T341 Series
- 1 Belt Pack wireless system +1 Lavalier Microphone for Belt Pack ATW-T310 Series

Microphone Stands

- 2 Boom Style

Communications

- 1 2Ch Main Station - Audiocom MS 2002
- 5 Single Muff Headsets - Telex 64438
- 5 1Ch Belt Pack - Telex BP 1002
- 1 One Ch. Speaker Station - Audiocom SS1002

More equipment *may* be available pending other center activity. Please inquire for availability of below inventory.

- Microphones
 - SHURE SM 58
 - SHURE SM 57
 - AUDIO TECHNICA Wireless Handheld ATW 3141bD
 - AUDIO TECHNICA Wireless Belt Pack ATW-T310bD
 - AUDIO TECHNICA Wireless Lavalier AT899cW-TH
- Direct Box
 - whirlwind Direct Box
- Speakers
 - RCF Powered Sub Speaker SUB705-AS MKII
 - RCF Monitor Speaker ART 708a
- Stage Box
 - Allen & Heath AB-168
- Assistive listening package
 - Anchor AL-9000
 - 6 AL-HP Headphones
 - 6 ALB-9000 Receivers

VIDEO

Projector

- Hitachi CP-WX8255A w/Standard lens + Hitachi SL-702 Short Zoom Lens (1.2 to 1.8 ratio)



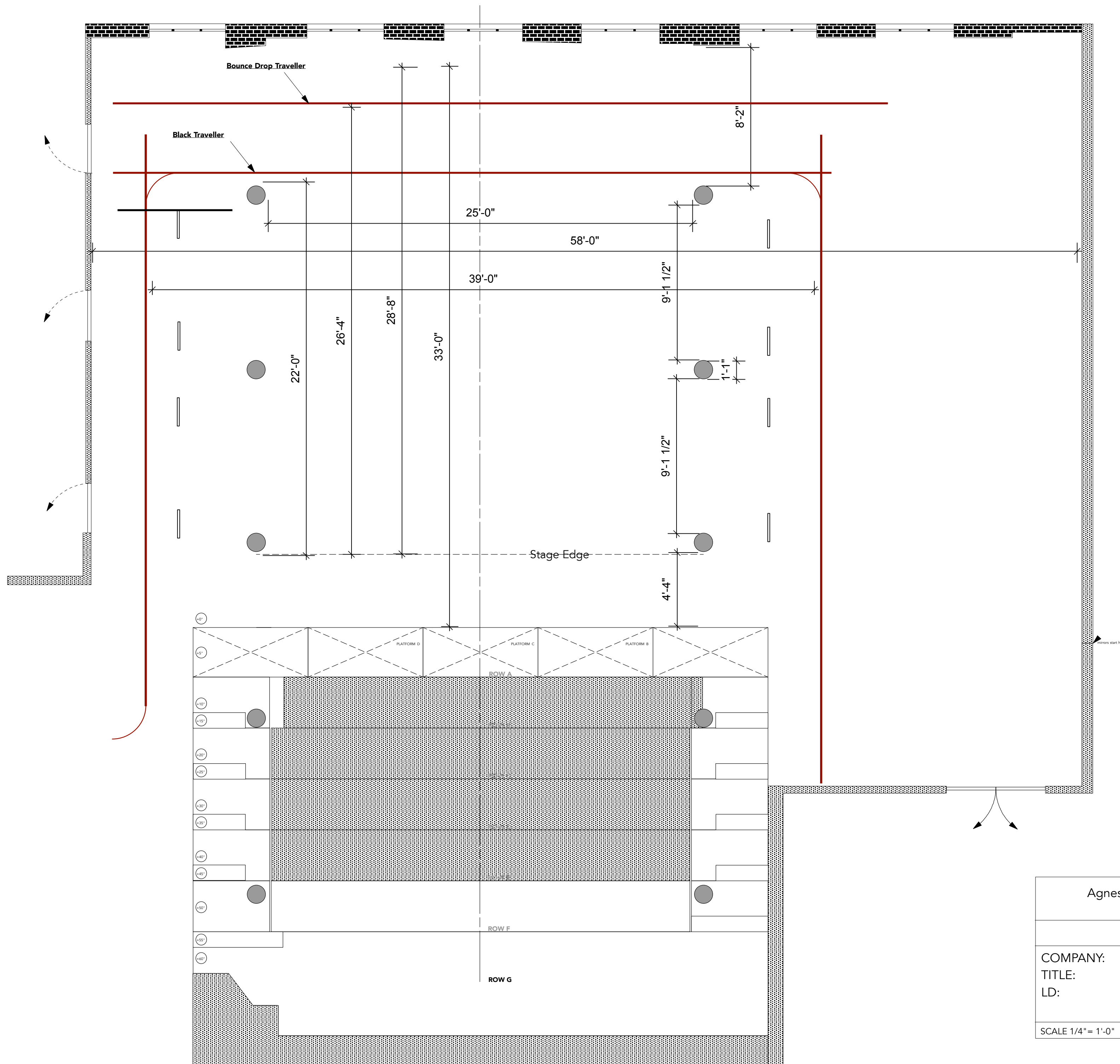
890 Broadway, Fifth Floor, New York, NY 10003 212 677 8560

280 Broadway (*enter at 53A Chambers Street*), New York, NY 10007 646 837 6809

www.gibneydance.org

More equipment may be available pending other center activity. Please inquire for availability of below inventory.

- Ben Q W1080ST
- Ben Q SH915
- Epson H552A
- NEC P502H
- Optima EH415ST



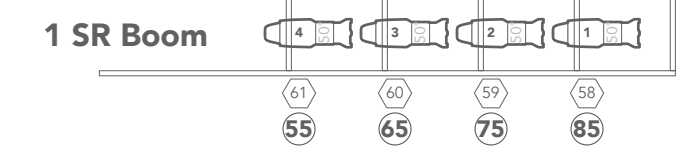
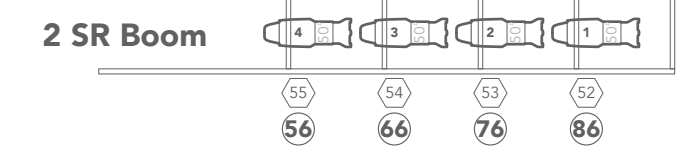
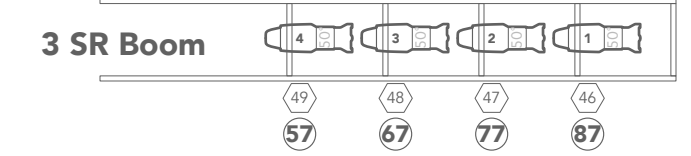
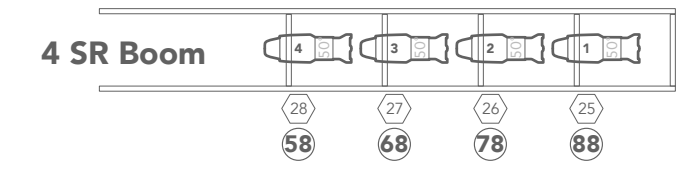
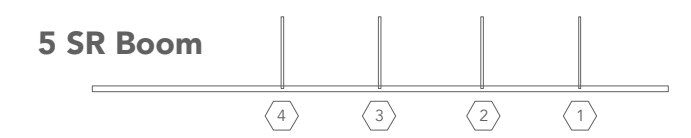
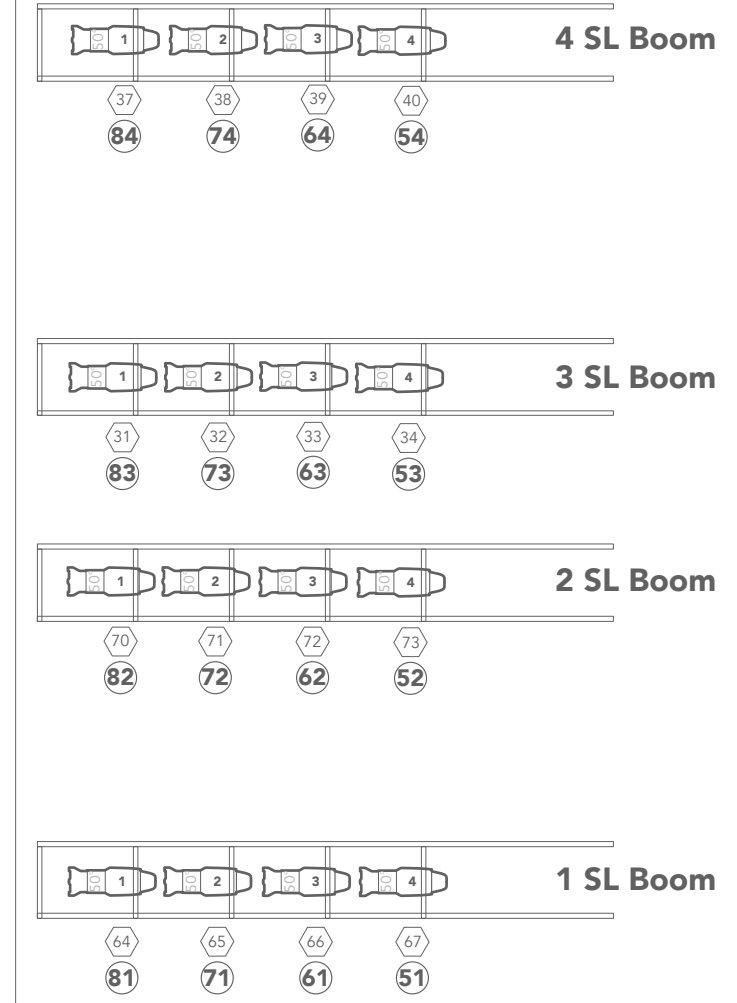
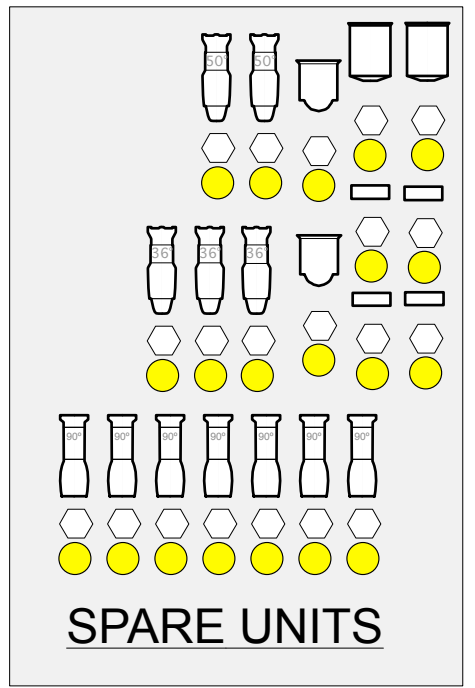
Agnes Varis Performing Arts Center
Studio H Theater

TD: asami morita
asami@gibneydance.org

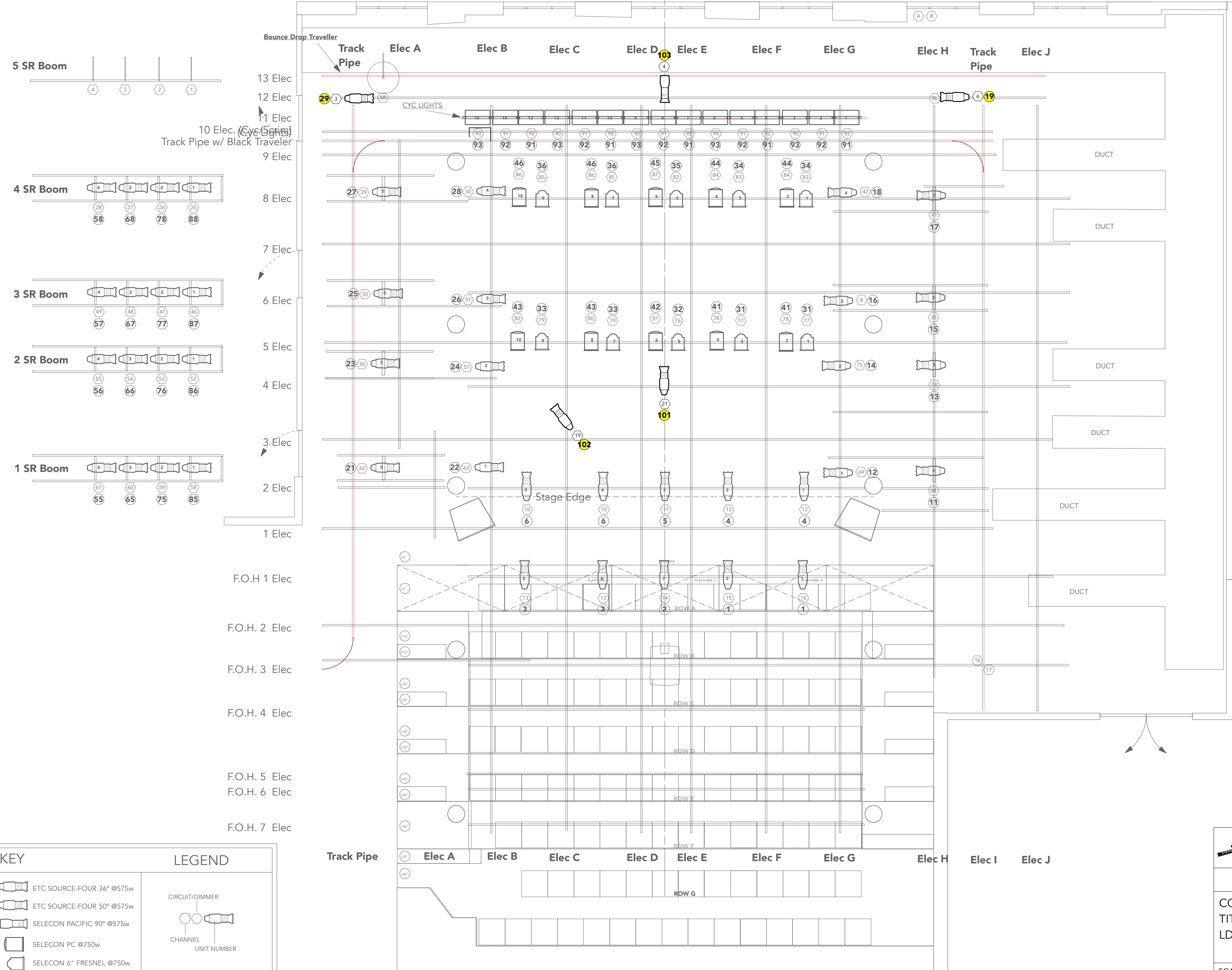
COMPANY:
TITLE:
LD:

SCALE 1/4" = 1'-0"

6/12/2017



KEY		LEGEND	
	ETC SOURCE-FOUR 36° @575w		CIRCUIT/DIMMER
	ETC SOURCE-FOUR 50° @575w		CHANNEL
	SELECON PACIFIC 90° @575w		UNIT NUMBER
	SELECON PC @750w	WORK-LIGHTS	
	SELECON 6" FRESNEL @750w	DIMMERS 24,43,44,45	
	ALTMAN Q-LITE @500w		
	SELECON HUI CYC @750w		



Agnes Varis Performing Arts Center
Studio H Theater

TD: asami morita
asami@gibneydance.org

COMPANY:
TITLE:
LD:

SCALE 1/4" = 1'-0" 6/12/2017